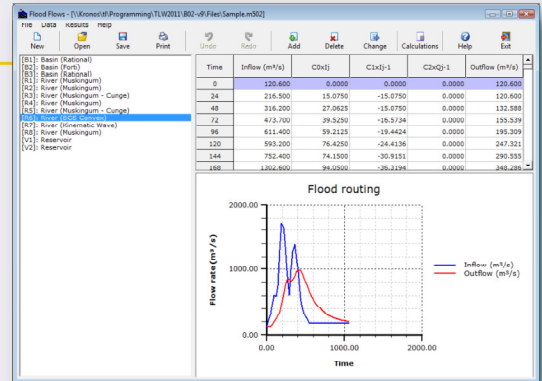




Flood Flows v12.0

Versatility & productivity

- Flood flows in basins
- Flood routing in rivers
- Flood routing in reservoirs
- Multilevel undo and redo



No	Solver	Concentration time (min)	Rainfall intensity (mm/h)	Flood flow (m³/s)
1	Carter	62.27	17.24	426.496
2	Direct value	N/A	N/A	N/A
3	Eagleson	27.41	25.98	627.254
4	Espey / Winslow	100.85	13.54	351.785
5	Federal Aviation Agency	47.48	16.53	420.892
6	Giandotti	726.51	5.05	142.838
7	Kerby / Hatheway	25.99	26.68	642.361
8	Kirpich	33.07	23.45	577.794
9	Kirpich (PA)	7.78	48.78	1083.414
10	Length and velocity	44.87	20.31	504.936
11	SCS Lag	126.54	12.09	337.990
12	TR-55P	20.13	21.78	526.547
13	TR-55U	49.28	19.38	484.371
14	California Culverts Practice	44.83	20.31	505.137
15	Inward	13.41	34.97	861.843
16	Kinematic wave	137.10	11.62	306.314
17	Recession	0.00	0.00	373.488

Flood flows in Basins:

For the rational method, the concentration time can be estimated with one of the following methods: Giandotti, Kirpich & Kirpich (PA), Federal Aviation Administration, Kerby/Hatheway, Carter, Eagleson, SCS Lag, Espey/Winslow, TR55P & TR55U, Length and velocity, Custom direct value.

For the empirical formulas, the concentration time may be estimated with one of the following methods: Fuller, Forti, Fanning, Kuichling, Iskovski.

Automatically compare the flood flow using all possible formulas and methods with one click!

Flood routing in rivers:

Use of Muskingum, Muskingum - Cunge, SCS Convex or Kinematic Wave methods.

Flood routing in reservoirs:

New storage curve with real-time preview.
Variable time-step storage indication method.

Hydrograph editor with integrated real-time preview and import/export capabilities.

Friendly user interface with embedded databases: IDF Curves, runoff coefficients (including greek, american and german regulations), Espey/Winslow channelization factor, SCS Curve Number and more.

Area	Description	T (years)	Coefficient c	Coefficient b	Coefficient n
Argos	Ministry of Agriculture	5	13.93	0	0.5
Argos	Ministry of Agriculture	3	12.79	0	0.5
Argos	Ministry of Agriculture	2	11.96	0	0.5
Argos	Ministry of Agriculture	1	10.65	0	0.5
Argos	Ministry of Agriculture	10	15.64	0	0.5
Arta	Ministry of Agriculture	5	10.65	0	0.5
Arta	Ministry of Agriculture	3	9.91	0.49	0.49
Arta	Ministry of Agriculture	2	9.09	0.35	0.35
Arta	Ministry of Agriculture	1	8.27	0.25	0.25
Arta	Ministry of Agriculture	10	11.9	0.25	0.25
Athens	Ministry of Agriculture	5	13.93	0	0.5
Athens	Ministry of Agriculture	3	12.79	0	0.5
Athens	Ministry of Agriculture	2	11.96	0	0.5
Athens	Ministry of Agriculture	1	10.65	0	0.5
Athens	Ministry of Agriculture	10	15.64	0	0.5

Export: Microsoft Word 2000, Excel 2000 or later, Bitmap image, ASCII file

A free functional demo is available at TechnoLogismiki's web site.

www.technologismiki.com

Since its foundation, Technologismiki specializes in the development of advanced technical software. Moreover, its activities include publishing of technical books and consulting services in the fields of Hydraulics, Hydrology, Environment and Water Resources.

TECHNO logismiki
Advanced Technical Software

5 Imittou str, 15561, Cholargos, Athens, Greece
tel: ++30 210 65 64 147 - fax: ++30 210 65 48 461
www.technologismiki.com - info@technologismiki.com