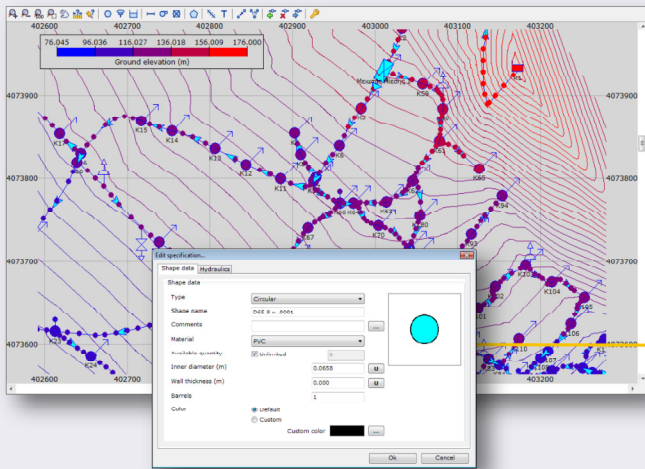
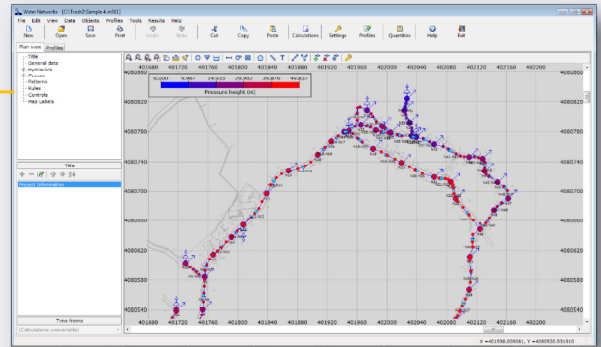




Water Networks v12.0

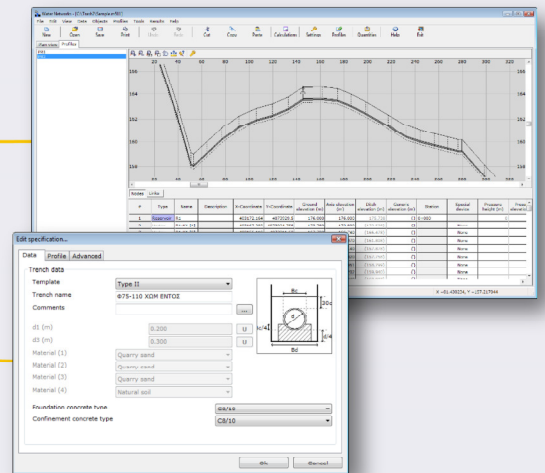
The best solution for water supply & irrigation

- Brand new CAD interface
- Unlimited objects
- Pipe vertices for exact description of the network
- Network rules and controls
- Curves for non-steady solution
- Network / background data from DXF
- Fully compatible with LandXML



- Pressure reducers, flow and pressure controllers, vacuum valves, air valves, check valves
- Steady and non-steady solution using constant or time-varying parameters
- Automatic network check
- Quality analysis of the network
- Multilevel undo/redo
- Customizable gradient coloring of objects
- Contour lines for various results
- Demands by direct input or by areas

- Water hammer and optimization of irrigation networks
- Detailed calculation of quantities (pipes, excavation, backfill, restoration etc)
- Energy consumption and cost analysis for the pumps.
- Easy reporting with graphs and detailed information.
- Easy creation of 2D/3D plan view in a variety of formats.
- Direct printing of profiles with one click.
- Calibration reports, for comparison of the calculated values against field measurement.



Export: Microsoft Word 2000, Excel 2000 or later, Bitmap image
 Import / Export: DXF (AutoCad R12 or later, Microstation, Intellicad etc), ArcView GIS 3.x or later, MapInfo, Epanet (v2.x or later), GTM (GPS Trackmaker 3.1 or later)

A free functional demo is available at TechnoLogismiki's web site.

www.technologismiki.com

Since its foundation, Technologismiki specializes in the development of advanced technical software. Moreover, its activities include publishing of technical books and consulting services in the fields of Hydraulics, Hydrology, Environment and Water Resources.

TECHNO logismiki

Advanced Technical Software

5 Imittou str, 15561, Cholargos, Athens, Greece
 tel: ++30 210 65 64 147 - fax: ++30 210 65 48 461
www.technologismiki.com - info@technologismiki.com