



Screen Model v8.0

Advanced Screen Model

This program is based on the well-known EPA Screen3 model. It provides an easy-to-use method of obtaining pollutant concentration estimates based on the screening procedures document. The program can perform all of the single source, short-term calculations in the screening procedures document, including estimating maximum ground-level concentrations and the distance to the maximum, incorporating the effects of building downwash on the maximum concentrations for both the near wake and far wake regions, estimating concentrations in the cavity recirculation zone, estimating concentrations due to inversion break-up and shoreline umigation and determining plume rise for flare releases.

Model output

A. Inputs and assumptions
 Buoyancy flux (m⁴/s³) = 82.2995
 Momentum flux (m⁴/s³) = 145.0000

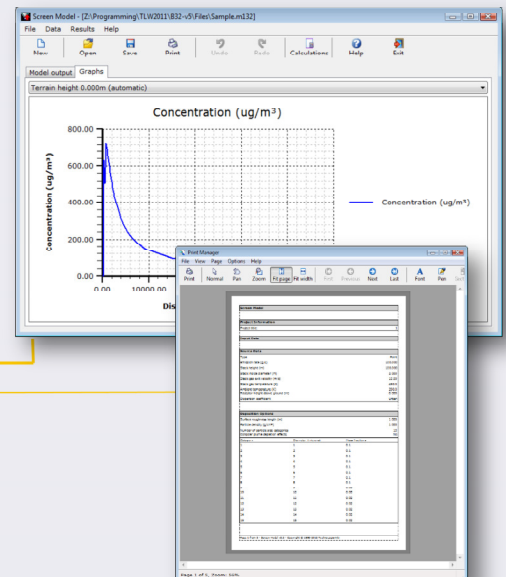
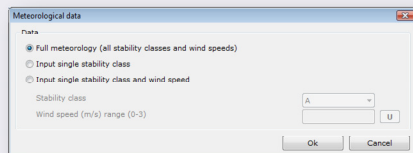
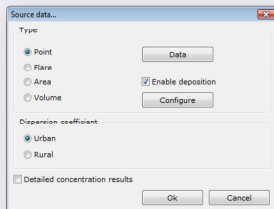
B. Assumed distances

Terrain heights of 0.000 (m) above stack base used for following distances

Dist	MOH DEPO	MOH DEPO	STAR	MOH DEPO	MOH DEPO	CONC AT	STAR
(m)	(ug/m ³)	(ug/m ³)	(m/s)	(ug/m ³)	(ug/m ³)	(ug/m ³)	(m/s)
1.0	0.0	0.000	0.0	0.000	0.0	0.0	0.0
100.0	0.0	0.000	0.0	0.000	0.0	0.0	0.0
200.0	0.0	0.000	0.0	0.000	0.0	0.0	0.0
300.0	629.2	0.031	1.16	0.832	89.0	4	20.0
400.0	815.4	0.026	1.16	0.875	140.3	3	10.0
500.0	806.2	0.028	6.10	0.872	88.1	4	20.0
600.0	888.8	0.023	6.10	0.873	88.2	4	20.0
700.0	979.8	0.019	6.10	0.869	94.0	4	20.0
800.0	727.0	0.024	6.10	0.813	41.9	4	20.0
900.0	710.9	0.024	6.10	0.859	36.4	4	20.0

Powerful, Flexible, Compatible

Point flare, area & volume sources.
 Fully compatible with EPA Screen 3.
 Deposition ready. Building downwash calculation.
 Multilevel undo and redo.



Enhance your productivity

Import/export data from Excel CSV files, ASCII txt files, or edit directly in the program's editor.
 Fully customizable embedded databases of common variables.
 Professional visual and analytical reports the way you want them to be.

A free functional demo is available at TechnoLogismiki's web site.

www.technologismiki.com

Since its foundation, TechnoLogismiki specializes in the development of advanced technical software. Moreover, its activities include publishing of technical books and consulting services in the fields of Hydraulics, Hydrology, Environment and Water Resources.

TECHNO logismiki
 Advanced Technical Software

5 Imittou str, 15561, Cholargos, Athens, Greece
 tel: ++30 210 65 64 147 - fax: ++30 210 65 48 461
www.technologismiki.com - info@technologismiki.com