



Mobile Emission v8.0

Necessary for the environmental engineer

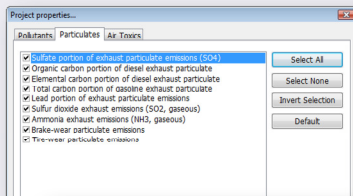
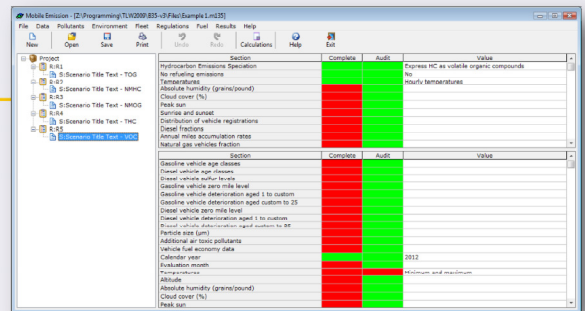
Calculation of emission factors for all passenger cars, trucks, motorcycles and buses.

Pollutants: hydrocarbons, carbon oxide, nitrogen oxides, CO₂.

Particulates: Ammonia, SO₂, SO₄, Lead, organic carbon, etc.

Toxic gases: benzene, formaldehyde, butadiene, acetaldehyde, etc.

Emitted particles from tire wear and brake wear are taken into account.



Vehicle	Composite HC (g/kWh)	Composite CO (g/kWh)	Composite NOx (g/kWh)	NOx (ppm)	NOx total (ppm)	HC total (ppm)	CO total (ppm)	SO ₂ (ppm)	SO ₄ (ppm)	SO ₂ (ppm)	SO ₄ (ppm)	Lead (ppm)	Organic carbon (ppm)	Total particulate (ppm)	Additional air toxic pollutants (ppm)	Vehicle fuel economy (L/100km)	Calendar year	Calculation month	Temperature (°C)	Absolute humidity (g/m ³)	Cloud cover (%)	Wind speed (m/s)	
LD20V	0.2281	0.600	1.376	0.477	0.294	0.477	0.102	0.001	0.000	0.104	0.000	0.001	0.291	N/A	N/A	N/A	N/A	N/A	N/A	N/A	N/A	N/A	N/A
LD21V	0.1960	0.600	1.094	0.394	0.244	0.394	0.084	0.001	0.000	0.084	0.000	0.001	0.244	N/A	N/A	N/A	N/A	N/A	N/A	N/A	N/A	N/A	N/A
LD22V	0.0930	0.670	0.390	0.430	0.490	0.430	0.103	0.001	0.000	0.103	0.000	0.000	0.290	N/A	N/A	N/A	N/A	N/A	N/A	N/A	N/A	N/A	N/A
LD23V	0.0930	1.171	11.790	0.811	0.700	0.811	0.202	0.000	0.000	0.102	0.103	0.010	0.000	0.561	N/A	N/A	N/A	N/A	N/A	N/A	N/A	N/A	N/A
LD24V	0.0432	1.231	11.920	1.134	0.946	1.134	0.202	0.000	0.000	0.102	0.103	0.010	0.000	0.561	N/A	N/A	N/A	N/A	N/A	N/A	N/A	N/A	N/A
LD25V	0.0000	0.600	0.700	1.104	N/A	1.104	0.103	0.007	0.104	0.103	0.010	0.000	0.430	N/A	N/A	N/A	N/A	N/A	N/A	N/A	N/A	N/A	N/A
LD26V	0.0010	0.600	0.410	1.170	N/A	1.170	0.118	0.010	0.118	0.118	0.010	0.000	0.390	N/A	N/A	N/A	N/A	N/A	N/A	N/A	N/A	N/A	N/A
LD27V	0.0011	1.360	10.700	1.130	N/A	1.130	0.202	0.010	0.202	0.202	0.010	0.000	0.260	N/A	N/A	N/A	N/A	N/A	N/A	N/A	N/A	N/A	N/A
LD28V	0.0011	1.000	10.200	2.170	N/A	2.170	0.202	0.010	0.202	0.202	0.010	0.000	0.270	N/A	N/A	N/A	N/A	N/A	N/A	N/A	N/A	N/A	N/A
LD29V	0.0013	1.000	10.200	2.010	N/A	2.010	0.202	0.004	0.202	0.202	0.010	0.000	0.274	N/A	N/A	N/A	N/A	N/A	N/A	N/A	N/A	N/A	N/A
LD30V	0.0014	1.190	11.740	2.000	N/A	2.000	0.204	0.004	0.204	0.204	0.010	0.000	0.267	N/A	N/A	N/A	N/A	N/A	N/A	N/A	N/A	N/A	N/A
LD31V	0.0010	1.673	12.760	3.130	N/A	3.130	0.428	0.139	0.428	0.428	0.010	0.000	1.103	N/A	N/A	N/A	N/A	N/A	N/A	N/A	N/A	N/A	N/A
LD32V	0.0000	0.600	0.700	0.900	N/A	0.900	0.000	0.000	0.000	0.000	0.000	0.000	0.000	0.000	N/A	N/A	N/A	N/A	N/A	N/A	N/A	N/A	N/A
LD33V	0.0002	0.121	0.800	0.219	0.208	0.219	0.000	0.000	0.000	0.000	0.000	0.000	0.000	0.000	N/A	N/A	N/A	N/A	N/A	N/A	N/A	N/A	N/A
LD34V	0.0000	0.600	0.600	0.900	0.000	0.000	0.000	0.000	0.000	0.000	0.000	0.000	0.000	0.000	N/A	N/A	N/A	N/A	N/A	N/A	N/A	N/A	N/A
LD35V	0.0000	0.180	0.480	1.670	N/A	1.670	0.000	0.000	0.000	0.000	0.000	0.000	0.000	0.000	N/A	N/A	N/A	N/A	N/A	N/A	N/A	N/A	N/A
LD36V	0.0000	0.180	1.480	1.670	N/A	1.670	0.000	0.000	0.000	0.000	0.000	0.000	0.000	0.000	N/A	N/A	N/A	N/A	N/A	N/A	N/A	N/A	N/A
LD37V	0.0000	0.220	0.740	2.670	N/A	2.670	0.000	0.000	0.000	0.000	0.000	0.000	0.000	0.000	N/A	N/A	N/A	N/A	N/A	N/A	N/A	N/A	N/A
LD38V	0.0000	0.240	0.780	3.10	N/A	3.10	0.000	0.000	0.000	0.000	0.000	0.000	0.000	0.000	N/A	N/A	N/A	N/A	N/A	N/A	N/A	N/A	N/A
LD39V	0.0000	0.240	0.780	3.10	N/A	3.10	0.000	0.000	0.000	0.000	0.000	0.000	0.000	0.000	N/A	N/A	N/A	N/A	N/A	N/A	N/A	N/A	N/A
LD40V	0.0000	0.450	1.80	4.80	N/A	4.80	0.000	0.000	0.000	0.000	0.000	0.000	0.000	0.000	N/A	N/A	N/A	N/A	N/A	N/A	N/A	N/A	N/A
LD41V	0.0000	0.600	1.80	4.80	N/A	4.80	0.000	0.000	0.000	0.000	0.000	0.000	0.000	0.000	N/A	N/A	N/A	N/A	N/A	N/A	N/A	N/A	N/A
LD42V	0.0000	2.360	10.000	1.100	0.000	1.100	1.100	0.000	0.000	0.000	0.000	0.000	0.000	0.000	N/A	N/A	N/A	N/A	N/A	N/A	N/A	N/A	N/A

Simple and easy data input

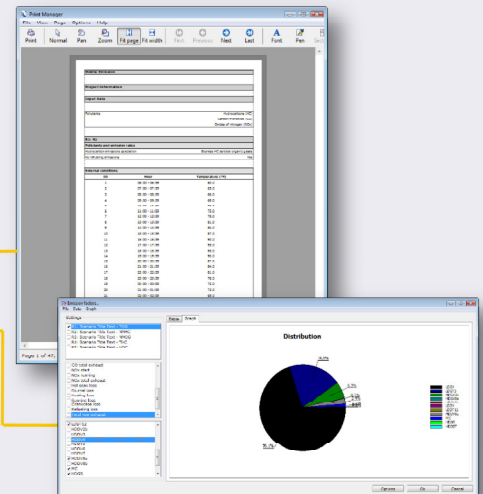
Enter data from external text files, by copying and pasting from Excel or by using the embedded editor.

Import projects from EPA Mobile models such as 6.2, 6.1 and 6.0 and also Mobile 5b and 5a.

Automatic internal checks for data validation.

Built-in scenarios guarantee data compatibility.

Multilevel undo and redo.



Superb presentation capabilities

Create graphs or tabular reports the way you want them to be.

Create customizable comprehensive printouts for some or all of your calculations with a single click.

Full export of the calculations results to external ASCII files, Microsoft Word and/or Microsoft Excel.

A free functional demo is available at TechnoLogismiki's web site.

www.technologismiki.com

Since its foundation, TechnoLogismiki specializes in the development of advanced technical software. Moreover, its activities include publishing of technical books and consulting services in the fields of Hydraulics, Hydrology, Environment and Water Resources.

TECHNO logismiki
Advanced Technical Software

5 Imittou str, 15561, Cholargos, Athens, Greece
tel: ++30 210 65 64 147 - fax: ++30 210 65 48 461
www.technologismiki.com - info@technologismiki.com