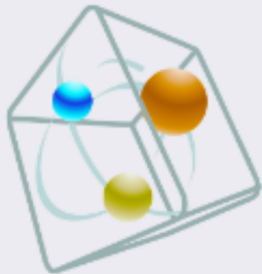


# Works 12



## Setup guide

*Version 2012.0.0*

© 2011 TechnoLogismiki

## USER GUIDE

[www.technologismiki.com](http://www.technologismiki.com)

 **TECHNO logismiki**

Advanced Technical Software

5 Imitou str, 15561, Cholargos, Athens, Greece  
tel: ++30 210 65 64 147 - fax: ++30 210 65 48 461  
[www.technologismiki.com](http://www.technologismiki.com) - [info@technologismiki.com](mailto:info@technologismiki.com)

# Setup guide

---

*TechnoLogismiki*

# Setup guide

© 2011 TechnoLogismiki

## **Publisher**

*TechnoLogismiki*

## **Editors**

*Fotis Fotopoulos*

*Aristotelis Charalampakis*

## **Technical Assistance**

*Antigoni Egglezou*

All rights reserved. No parts of this work may be reproduced in any form or by any means - graphic, electronic, or mechanical, including photocopying, recording, taping, or information storage and retrieval systems - without the written permission of the publisher. You are entitled to one (1) paper copy for your own reference.

Products that are referred to in this document may be either trademarks and/or registered trademarks of the respective owners. The publisher and the author make no claim to these trademarks.

While every precaution has been taken in the preparation of this document, the publisher and the author assume no responsibility for errors or omissions, or for damages resulting from the use of information contained in this document or from the use of programs and source code that may accompany it. In no event shall the publisher and the author be liable for any loss of profit or any other commercial damage caused or alleged to have been caused directly or indirectly by this document.

Printed: Αύγουστος 2011 in Athens, Greece.

# Table of Contents

## Chapter I About the guide

## Chapter II Contact

## Chapter III Installation instructions

1	Before the installation.....	11
2	Starting installation.....	11
3	Language selection.....	12
4	Welcome message.....	13
5	End user license agreement.....	14
6	Installation type.....	14
7	Shortcut folder.....	15
8	File copy initialization.....	16
9	Hasp driver.....	16
	Hasp driver welcome message .....	16
	Hasp driver installation .....	17
10	Copying files locally.....	17
11	Finishing installation.....	18
12	Troubleshooting.....	19

## Chapter IV Uninstallation instructions

1	Uninstalling core.....	22
2	Uninstalling hasp.....	23
3	Removing registry entries.....	24
4	Removing leftover files.....	25

## Chapter V User license

1	User license.....	28
2	Minimum requirements.....	28
3	Downloading user license.....	28

## Chapter VI Add or remove programs

1	Add or remove programs.....	32
2	Add programs.....	32
	Add programs .....	32
	Local installation .....	33
	Installation from the Internet .....	34
	Select programs .....	35

<b>3</b>	<b>Remove programs.....</b>	<b>36</b>
	Remove programs .....	36
	Local data .....	37
	Data from the Internet .....	37
	Select programs .....	38

	<b>Keyword Index</b>	<b>0</b>
--	----------------------	----------

# Chapter

---



# 1 About the guide

Thank you for your interest in our products. At TechnoLogismiki, we work around the clock to continuously improve our products. We take great care to comply with the latest scientific guidelines and to give you a simple, user friendly yet powerful product.

This installation guide contains the following sections:

- 1. Installation instructions:** detailed instructions regarding the installation of the professional or demonstration version of TechnoLogismiki Works 2011. The installation (professional or demonstration) refers only to the framework, which is the necessary common files for all the applications of the suite. Due to the large number of applications, the user can choose which applications to install after the framework is successfully installed.
- 2. Uninstallation:** detailed instructions regarding the de-installation of the professional or demonstration version of TechnoLogismiki Works 2011.
- 3. License retrieval:** detailed instructions regarding the retrieval of one or more user licenses. This section is relevant only to the professional edition and does not apply to the demonstration version of the suite.
- 4. Add or remove applications:** add applications, remove applications, update your installed applications, etc.

If you have any comments or questions regarding the installation guide, please contact TechnoLogismiki at this address: [support@technologismiki.com](mailto:support@technologismiki.com). Alternative contact information is provided in Chapter II of this guide.

**NOTE:** TechnoLogismiki respects your privacy. Under no circumstance data are transmitted from your PC to TechnoLogismiki's servers. This is done to ensure your privacy.

# Chapter

---



---

## 2 Contact

You may contact TechnoLogismiki at the following address:

**TechnoLogismiki**

Imitou 5 Cholargos

15561 Athens, Greece

Tel: ++30-210-656-4147

Fax: ++30-210-654-8461

<http://www.technologismiki.com/>

<mailto:support@technologismiki.com>

# Chapter

---



## 3 Installation instructions

### 3.1 Before the installation

Please remove all hasp keys located on the ports of your computer. DO NOT ATTACH the Hydraulic Program's hasp key yet. Make sure that the target computer (where the installation will take place) meets the following minimum requirement:

- Operating system: Windows 2000 Professional SP3/Server SP3, XP (home/pro), 2003, Vista, 7.
- 512 MB Ram (2 GB Recommended).
- Free disk space (at least) 900 MB.
- 1024x768 minimum resolution display.
- Internet Explorer 7.0+ or Mozilla Firefox 2.0+.
- DVD-Rom or DVD-Rom.

Internet connection is required only during downloading user licenses from TechnoLogismiki's servers. This procedure must be completed only once. Re-installation of the programs on the same PC does not require downloading the user license again.

**NOTES:**

- No serial number is required for the installation. The programs may be installed on an infinite number of PC's, however the hasp key is required each time they are executed.
- Every hasp requires a separate user license. If the correct user license is not present, then the programs will not run. Therefore you should use a specific hasp key for each computer.

### 3.2 Starting installation

By inserting the TechnoLogismiki Works 2011 installation DVD in your computer's DVD-Rom drive, the installation program will automatically start.

However, if your computer has been instructed not to autoplay DVDs, then you must follow the manual procedure described below to start the installation wizard:

For Windows XP:

1. Click on the Windows **start** button.
2. From the pop-up menu select **Run**.
3. Enter in the text field the phrase **D:\tlw2011.exe**
4. Press **Ok** to start the installation or hit **Cancel** if you do not want to start the installation.

For Windows Vista / 7:

1. Click on the **Windows orb** at the lower left corner of your screen.
2. Type **Run** and press **Enter**.
3. Enter in the text field the phrase **D:\tlw2011.exe**
4. Press **Ok** to start the installation or hit **Cancel** if you do not want to start the installation.

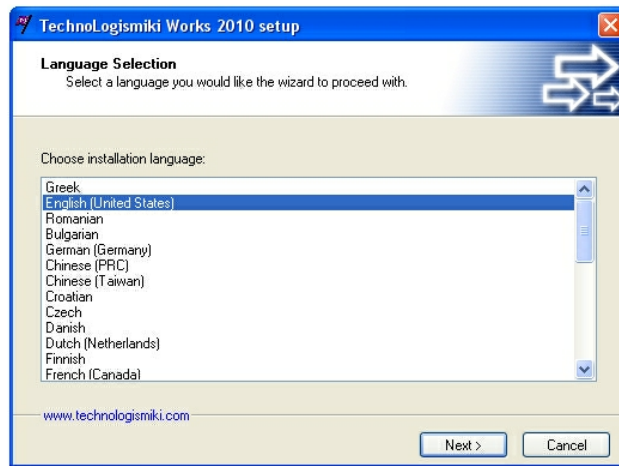
**WARNING:** In the third step, instead of using the letter D, you must use the letter that corresponds to the DVD-Rom drive that is used to accommodate the TechnoLogismiki Works 2011 installation DVD.

### 3.3 Language selection

The installation language is selected. It is highly recommended to choose the English (United States) language pack since the screenshots in this user guide were taken using the English language pack.

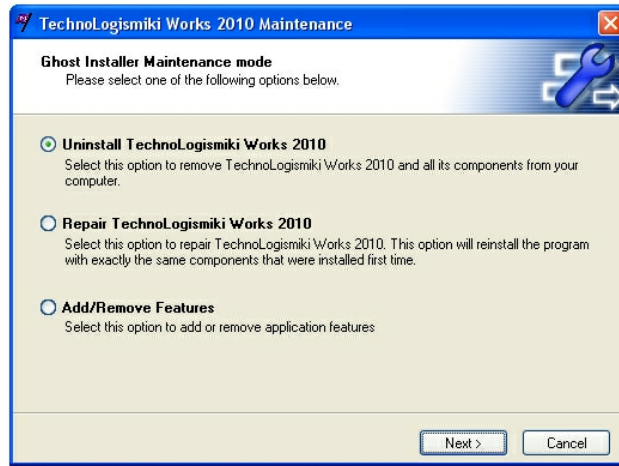
To select the language of your choice:

1. Select the language you prefer by single clicking it on the list of available languages.
2. Press the **Next >** button to go to the next step.
3. Press **Cancel** to terminate the installation wizard without installing the programs.



**NOTE:** No matter which language pack is used during the installation, each application will ask the user which language pack to use. Besides, the same files will be copied to your PC and you will be able to use both English and Greek language packs and user guides upon successful installation of the programs.

If instead of the installation wizard the following form pops-up:



Then:

A) TechnoLogismiki Works 2011 framework is already installed and you do not need to re-install it.

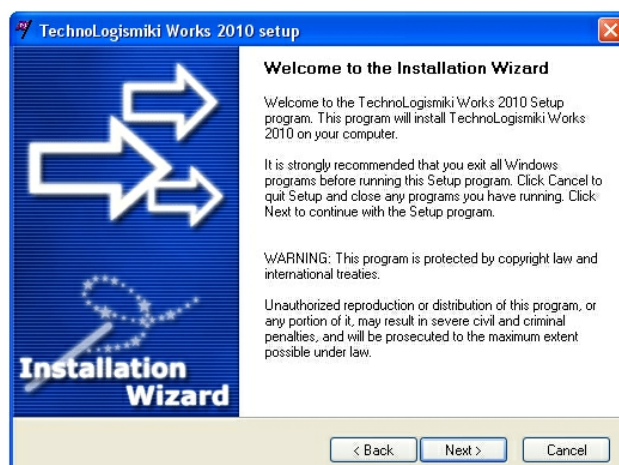
or B) A previous version of this product is present in your computer.

- In the first case, just hit the **Cancel** button to stop the installation wizard. In the second case you must uninstall (remove) the older version (please see the installation guide that shipped with the older version for more detailed information) and after the previous version is removed, install this version by following all the steps described in this user guide from the beginning.

### 3.4 Welcome message

To complete this step, no specific user intervention is required:

1. The welcome message appears on screen.
2. Press the **< Back** button to go to the previous step.
3. Press the **Next >** button to go to the next step.
4. Press **Cancel** to terminate the installation wizard without installing the programs.

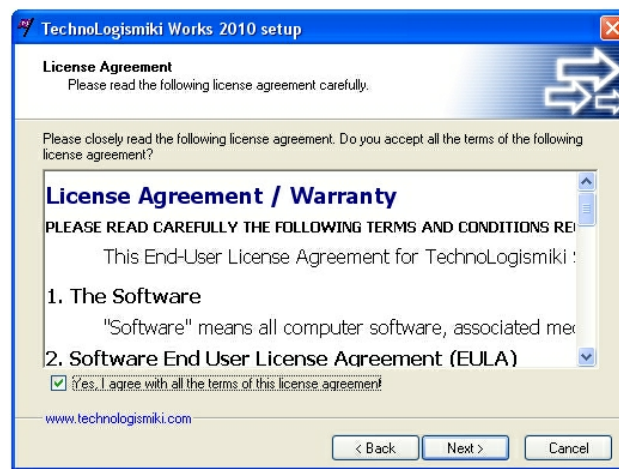


### 3.5 End user license agreement

The end user license agreement (EULA) appears. The EULA may be available in other languages at TechnoLogismiki web site.

To accept the license agreement:

1. After carefully reading the end user license agreement check the option **Yes, I agree with all the terms of this license agreement.**
2. Press the **< Back** button to go to the previous step.
3. Press the **Next >** button to go to the next step.
4. Press **Cancel** to terminate the installation wizard without installing the programs.



**WARNING:** If you do NOT agree with one or more of the terms in the EULA, you must terminate the installation procedure at this point. If the installation continues beyond this step, then this automatically signifies the unconditional acceptance of all the terms present in the EULA.

If you are in doubt or you have any questions, comments or concerns regarding the EULA, TechnoLogismiki is at your service to clarify any of the terms contained in the EULA.

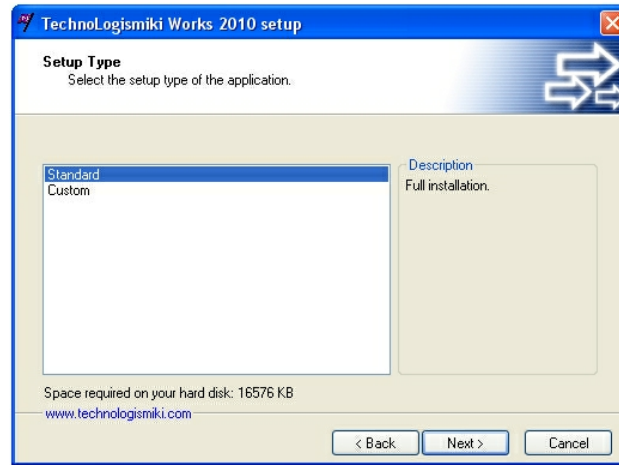
If you decide not to accept the EULA, then you are obliged by law to return as soon as possible and in no more than 15 business days counting from the date on the invoice or receipt, all the material related to this product (DVDs, user guides, hasp keys, information sheets, etc) and you will receive a full refund excluding the shipping costs. Shipping costs are void in Greece and Cyprus.

### 3.6 Installation type

The installation type is selected. If the **Standard** type is selected, the all the framework files will be installed. If the **Custom** type is selected then the user can select part of the framework files.

To select the installation type:

1. Select the installation type from the list.
2. Press the **< Back** button to go to the previous step.
3. Press the **Next >** button to go to the next step.
4. Press **Cancel** to terminate the installation wizard without installing the programs.

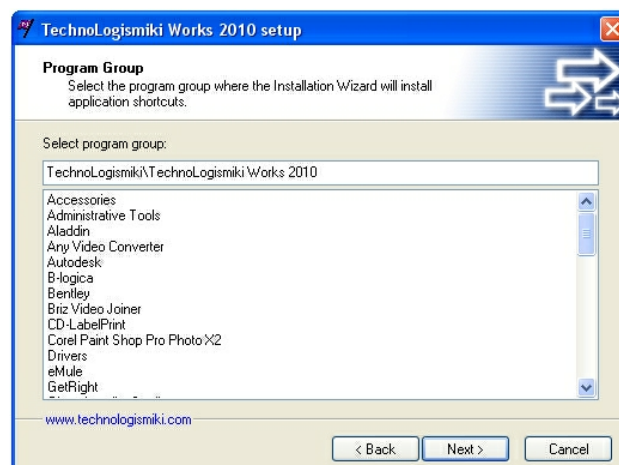


**WARNING:** It is highly recommended to choose the Standard installation type. Selecting Custom is for advanced users and required further actions which are not described in this guide.

### 3.7 Shortcut folder

Optionally, you may customize the shortcut folder that will hold the links for starting TechnoLogismiki Works 2011. Although this is possible, it is not recommended to change the default settings.

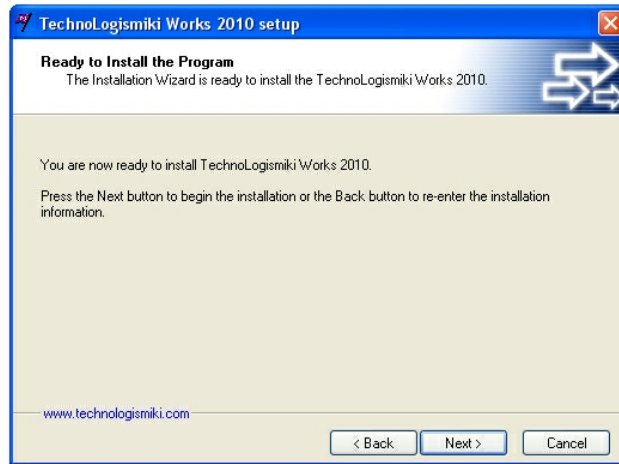
1. Enter the program group (shortcut folder).
2. Press the **< Back** button to go to the previous step.
3. Press the **Next >** button to go to the next step.
4. Press **Cancel** to terminate the installation wizard without installing the programs.



## 3.8 File copy initialization

At this point, the installation wizard is ready to start copying files from the DVD to your computer.

1. Press the **< Back** button to go to the previous step.
2. Press the **Next >** button to allow the installation wizard to start copying files.
3. Press **Cancel** to terminate the installation wizard without installing the programs.



## 3.9 Hasp driver

### 3.9.1 Hasp driver welcome message

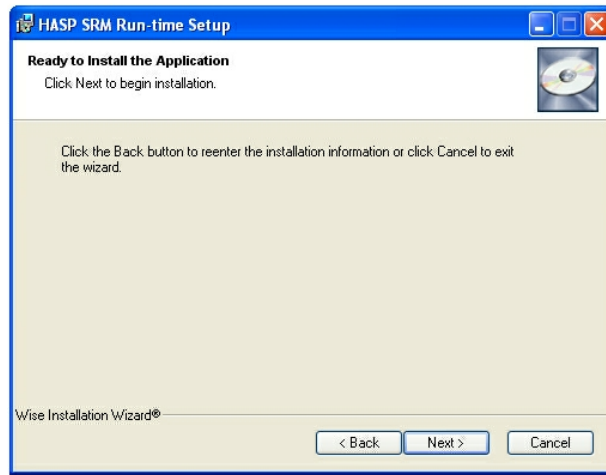
The hasp driver welcome message appears on screen.

1. Press **Next >** to go to the next step.
2. Press **Cancel** to stop the installation without installing the hasp drivers.



### 3.9.2 Hasp driver installation

The installation program start copying files from the DVD to your computer. Several different system messages may appear which can be ignored.



**NOTE:** The installation may take a few minutes. You must not terminate manually the installation. If you disrupt the installation wizard, you must repeat all the step described in the paragraph **Hasp driver**.

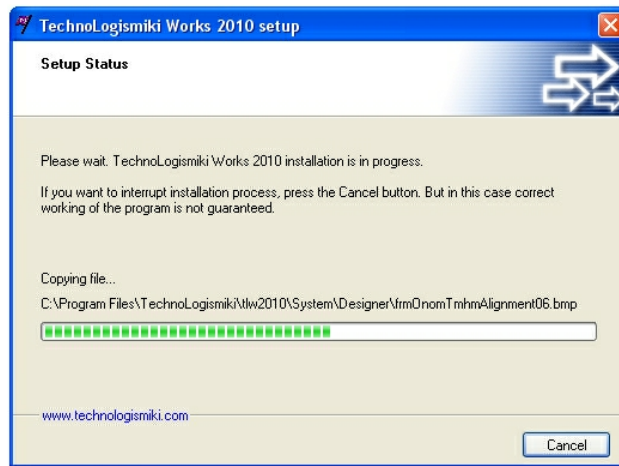
When the installation is over, a confirmation message appears, notifying the user that the hasp drivers have been successfully installed on the target computer. Hit **Finish** to continue installing the rest of the framework files.



### 3.10 Copying files locally

All the necessary common framework files are copied from the installation DVD to the destination computer.

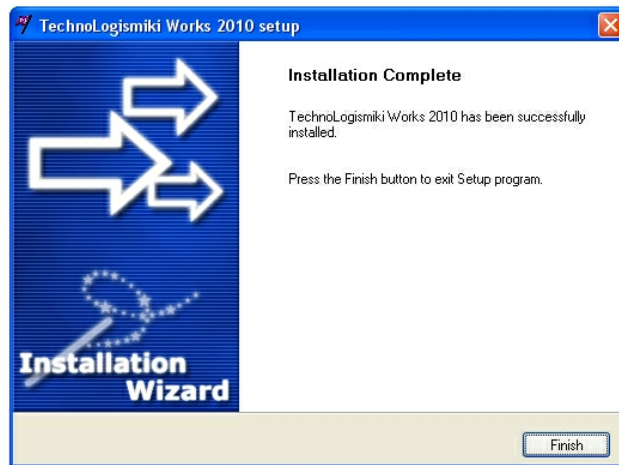
Hitting **Cancel** will cause the installation to stop and delete all files that were copied. This is not recommended.



### 3.11 Finishing installation

The installation of the framework is not complete. The next steps are:

- to retrieve your user license (professional edition only)
- to install one or more applications
- optionally, you may print one or more user guides



To retrieve your user license:

1. Please consult the section User License in this user guide.

To install one or more framework applications:

1. Please consult the section Add or Remove programs in this user guide.

To print one or more user guides:

1. Install the latest version of Adobe Acrobat Reader. Adobe Acrobat Reader may be used without charge.
2. In the DOCS folder of the TechnoLogismiki Works 2011 installation DVD you can find all the user guides in PDF format.
3. Files with the G- prefix are user guides written in Greek language.
4. Files with the E- prefix are user guides written in English language.

## 3.12 Troubleshooting

**PROBLEM:** The programs do not recognize the HASP key, fail to start with the error message «Aladdin driver failed to start».

**SOLUTION:** This problem usually occurs when the computer's memory (in total) is more than 4 GB. It also happens in some Windows versions (like XP2 with 64-bit extensions). If your DVD-Rom letter is D, then insert the installation DVD in your DVD-Rom Drive and follow the instructions below:

1. Click on **Start**
2. Click on **Run**
3. Type **D:\Aladdin\Hinstall\hinstall.exe -i**
4. Follow the instructions on screen in order to install the hasp drivers.
5. The problem should be resolved.

---

**PROBLEM:** You cannot install the hasp driver. A message prompt pops up indicating that there is «Insufficient memory». You cannot run the programs.

**SOLUTION:** Your system security settings do not allow the installation of a driver from the DVD-Rom directly. Copy the file D:\Aladdin\hdd32.exe from your DVD-Rom to any location on your hard disk drive and run it locally from your hard disk. The hasp driver can be installed successfully and you can run the programs without any further issues.

---

**PROBLEM:** The hasp driver cannot be installed and there is an error message at the end of the installation process. You cannot run the programs and there is another Aladdin hasp key connected to your PC which is used by third party programs.

**SOLUTION:** Some software products (3rd party solutions) are using the same hasp key type. To solve this issue you must install the driver using the following procedure:

1. Click on **Start**
2. Click on **Run**
3. Type **D:\Aladdin\DiagnostiX\aksdiag32.exe**
4. Install this program following the on-screen instructions.
5. The setup of the DiagnostiX program ends successfully.
6. Click on **Start**
7. Click on **Programs**
8. Select **Aladdin** and then **DiagnostiX**

**9.** Select the program **Aladdin DiagnostiX**

**10.** When the program shows up, click on the **Driver Update** button, located at the bottom of the main form.

**11.** Connect to the Internet

**12.** Click on the **Proceed** button

**13.** The latest hasp driver is downloaded and installed automatically for you

**14.** Restart your computer

If the problem persists, then the only solution is to remove all other hardware keys and connect TechnoLogismiki's hasp key to your computer.

# Chapter

---

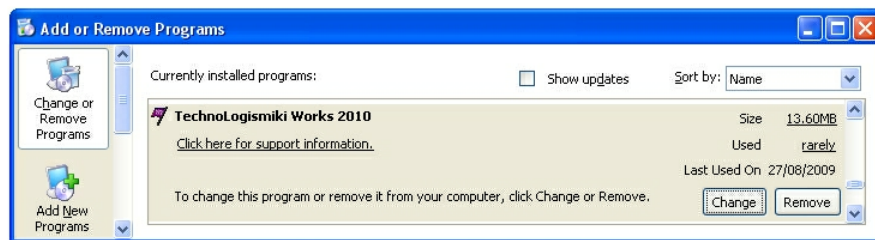
IV

## 4 Uninstallation instructions

### 4.1 Uninstalling core

To start the uninstallation procedure which will remove TechnoLogismiki Works 2011, related files and folders, shortcuts, registry entries and related programs:

1. Click on **Start**.
2. Select the **Settings** menu.
3. From the new menu that pops up, select **Control Panel**.
4. Select the **Add or Remove Programs** entry.
5. Seek and select the entry named **TechnoLogismiki Works 2011**.
6. By pressing **Remove** the uninstallation procedure starts.

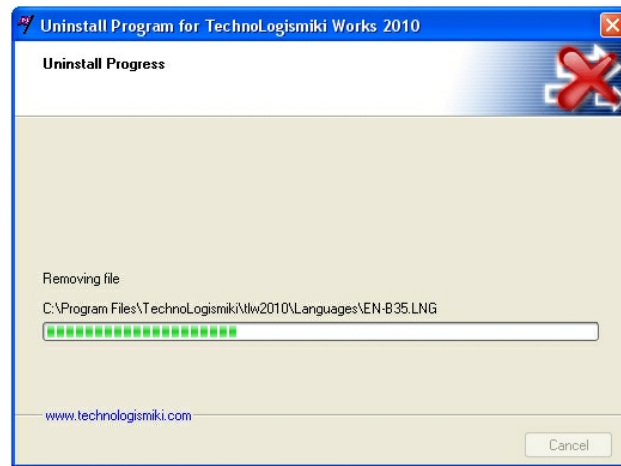


A confirmation message is likely to appear, asking if uninstalling the product is really requested by the user. In this case, confirm the uninstallation by selecting **Ok**.

1. Hit **Next >** to uninstall the framework core.
2. Hit **Cancel** to stop the removal of the framework core and close the wizard.



The de-installation wizard removes all the framework common files. You cannot stop the removal of the framework files. The programs will no longer be able to run and if you need them again in the future you have to follow the installation instructions described in the previous chapter.



The de-installation of the framework core files has finished. Pressing **Finish** will close the uninstallation wizard.

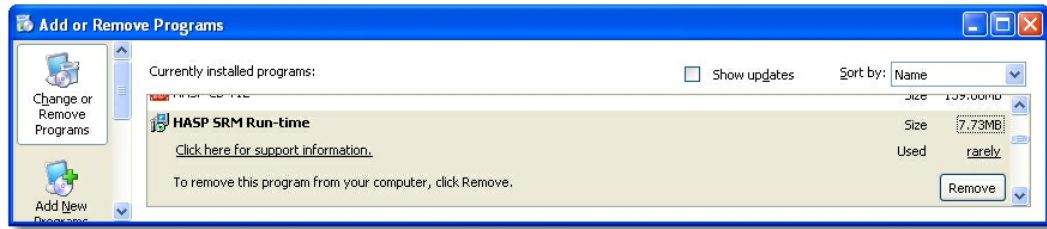


## 4.2 Uninstalling hasp

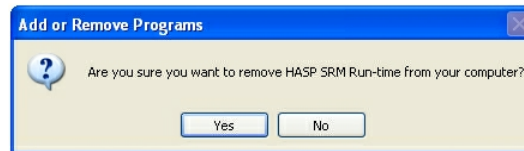
If there are no other HASP keys in your computer, you may want to delete the hasp driver files.

To remove the hasp driver files:

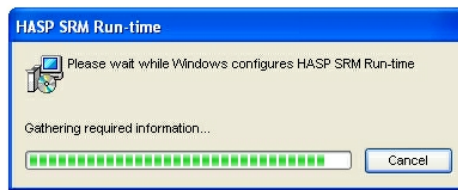
1. Click on **Start**.
2. Select the **Settings** menu.
3. From the new menu that pops up, select **Control Panel**.
4. Select the **Add or Remove Programs** entry.
5. Seek and select the entry named **HASP SRM Run-time**.
6. By pressing **Change/Remove** the uninstallation procedure starts.



Choose **Automatic** and hit **Next >** to go to the next step.



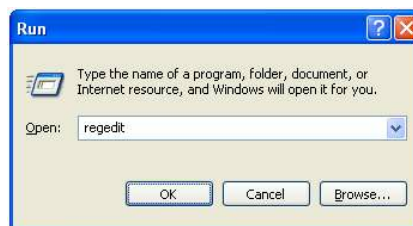
Press **Finish** to uninstall all HASP driver files. Hit **Cancel** to close the uninstallation wizard without removing the HASP driver files. You may also click on the **< Back** button to go to the previous step.



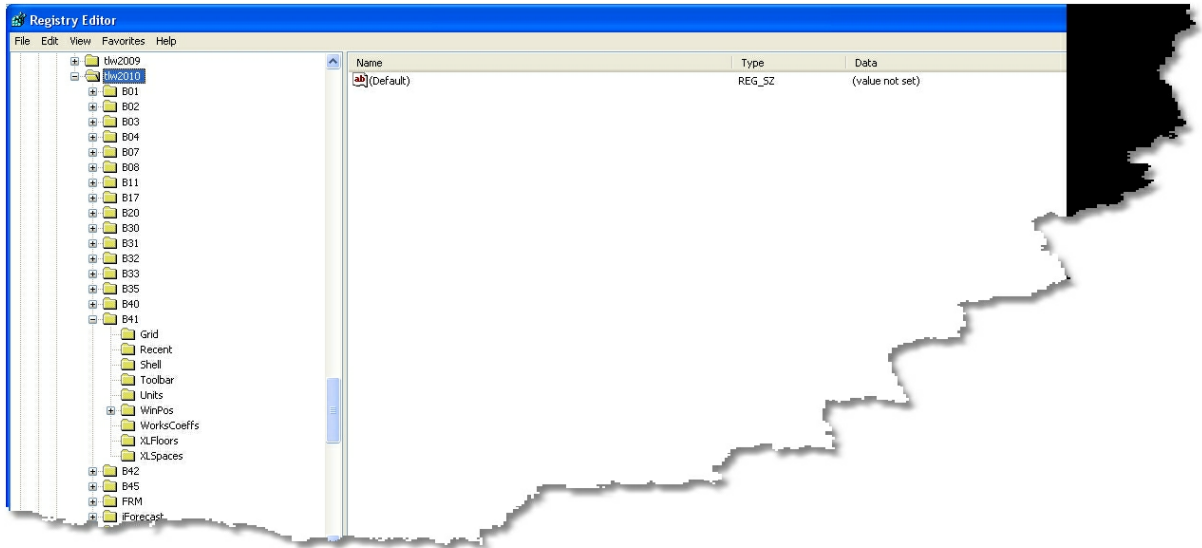
### 4.3 Removing registry entries

To remove the registry entries made by TechnoLogismiki Works 2011 and all of the installed applications:

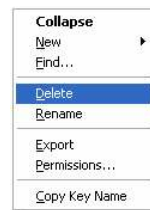
1. Click on the Windows **start** button
2. From the pop-up menu select **Run**
3. Enter **Regedit**.
4. Press **Ok** to start the Regedit application.



5. Navigate in Regedit's treeview until the following key is selected:  
My Computer\ HKEY\_CURRENT\_USER\ Software\ TechnoLogismiki\ TLW2011



6. Right click on this key.
7. From the pop-up menu select **Delete**

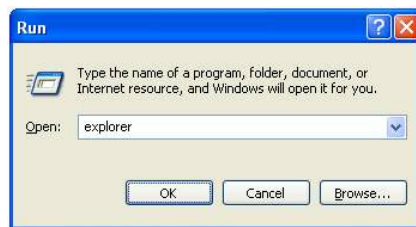


8. Select Yes when you are asked if you confirm the removal of this key.
9. Close Registry Editor by selecting the **Exit** menu which is found under the **File** menu.

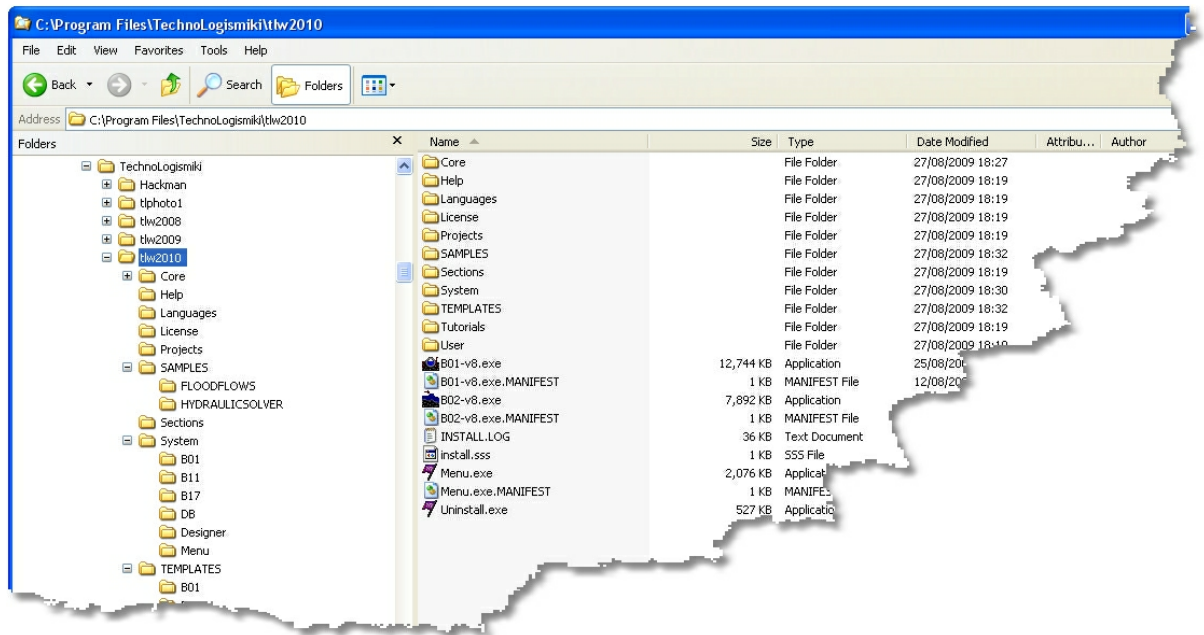
#### 4.4 Removing leftover files

To delete any leftover files:

1. Click on the Windows **start** button
2. From the pop-up menu select **Run**
3. Enter **Explorer**.
4. Press **Ok** to start the **Windows Explorer**.



5. Select **Program Files** folder in drive C.
6. Select the subfolder **TechnoLogismiki**.
7. Select the subfolder **TLW2011**.



8. Right click on the subfolder **TLW2011** and select **Delete** from the pop-up menu.
9. Answer **Yes** to all the confirmation questions in order to delete any leftover files.

**WARNING:** IN the TLW2011 folder there may be useful files and projects. Before reaching step 8, the user must ensure that no useful files are in the TLW2011 folder.

# Chapter

---



## 5 User license

### 5.1 User license

TechnoLogismiki Works 2011 may be used only after the user license is retrieved and installed. This procedure is mandatory if one or more of the following conditions is met:

- If you upgrade from a previous version (i.e. 2008 or 2009)
- If you have added one or more new programs since you last retrieved your license (i.e. you bought a program).
- After re-installing the programs.

**NOTE:** If you do not retrieve your licenses, the programs will function in demonstration mode.

**NOTE:** This section refers to the professional version of the programs. If you install the demonstration version of the suite then you may omit this chapter.

### 5.2 Minimum requirements

You must have an open connection to the Internet. If no Internet connection is available, then you must contact TechnoLogismiki via phone or fax to order a special installation DVD at no additional cost (shipping and handling charges may apply).

### 5.3 Downloading user license

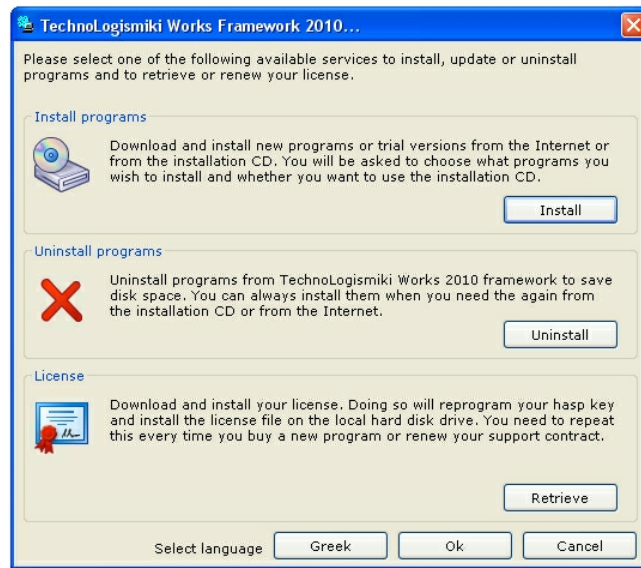
**NOTE:** You must have an active support contract. If you do not have an active support contract then you will be prompted to purchase one through Internet.

To retrieve your user license:

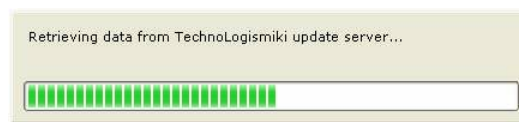
1. Click **Start**.
2. Click **Programs**.
3. Select the shortcut folder **TechnoLogismiki**.
4. Select the shortcut subfolder **TechnoLogismiki Works 2011**.
5. Click on **Main Menu**.
6. When the main menu starts (you may be asked to select an interface language, please select English), click on the update tool:



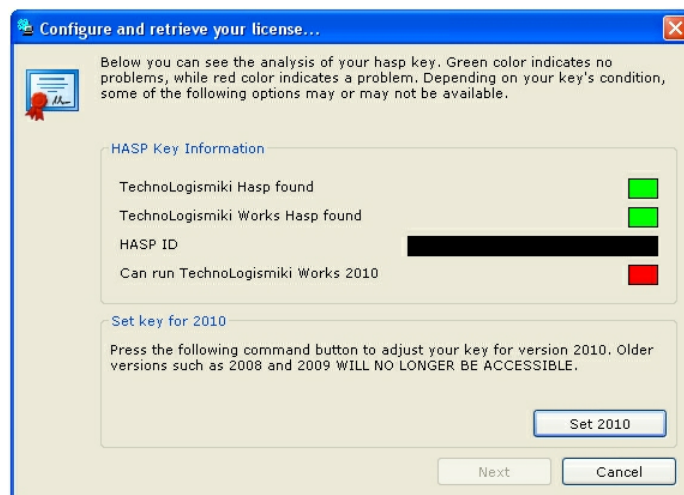
7. You may be asked again to select an interface language for the update tool. Please select English.



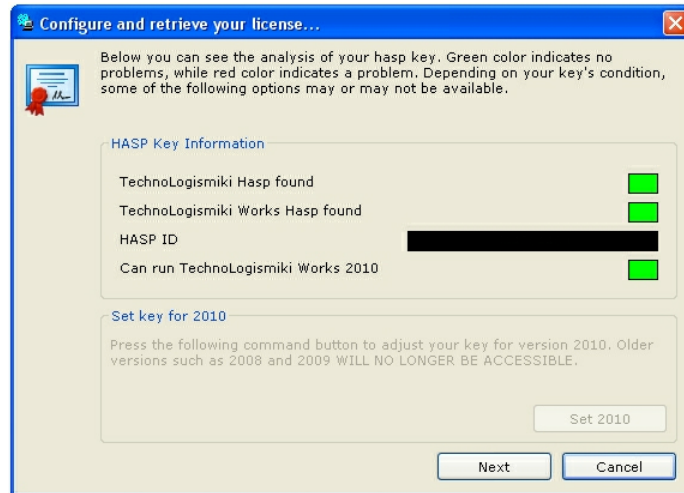
8. Hit **Retrieve** to connect to the Internet and have the framework check for your user license.



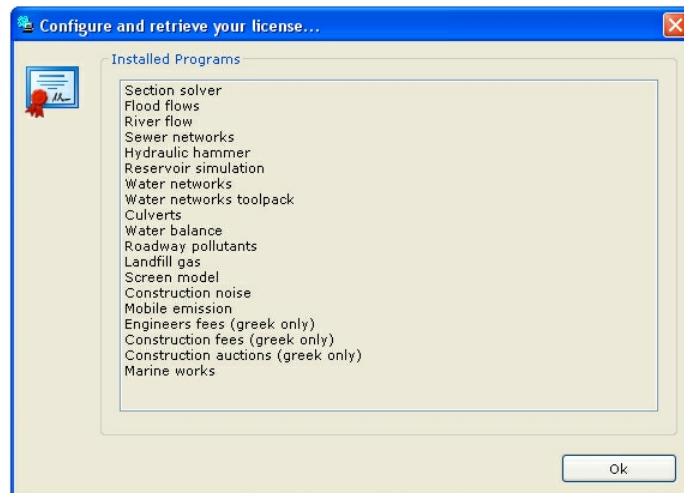
9. When all the necessary data are downloaded, your hasp key is being checked.



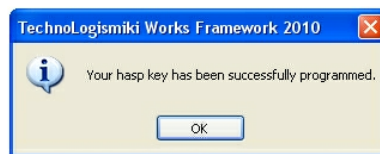
10. If you see any red rectangles, then your hasp key is not set for TechnoLogismiki Works 2011. Click on **Set 2011** button to re-configure your hasp key. This procedure is necessary only once per hasp key.



**11.** After your hasp key is configured, press the **Next** button to retrieve your license. The program will automatically retrieve your license from the Internet and program your hasp key. Please wait until this operation finishes.



**12.** The following message appears upon successful termination of the license retrieval operation:



**13.** Press **Ok** to close the message shown above. The list in the license retrieval form contains all the license products.

**14.** Press **Ok** to close the user license retrieval form.

**15.** The framework tool may be closed by clicking of the upper right **X** located on top of the window.

# Chapter

---

VI

## 6 Add or remove programs

### 6.1 Add or remove programs

Due to the large number of applications that rarely a single user needs, you may add and remove one or more of the TechnoLogismiki Works 2011 applications. The number of compatible applications varies, therefore an exhaustive list is only available in TechnoLogismiki's website.

Besides, TechnoLogismiki regularly updates existing applications and releases new products. It is very important that users have the latest versions of all the products installed in their computers.

In the next paragraphs you can find detailed information on how you can:

- Add or update one or more applications
- Remove one or more applications

An active Internet connection (recommended) or the installation DVD is required for both actions.

**NOTE:** Several actions require an active support contract.

### 6.2 Add programs

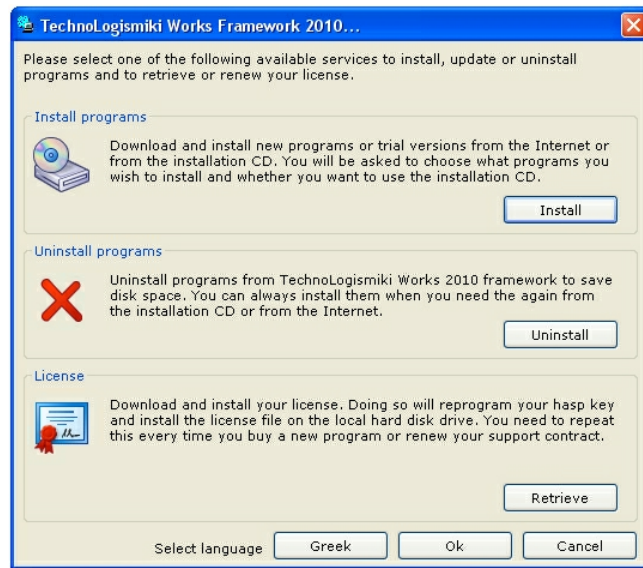
#### 6.2.1 Add programs

To add or update one or more programs:

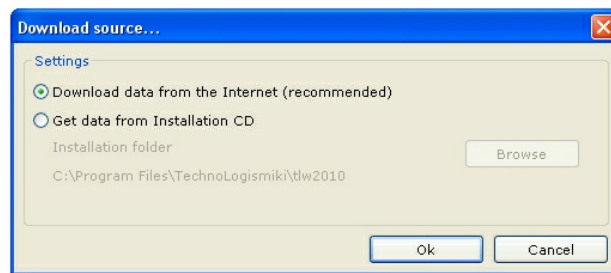
1. Click **Start**.
2. Click **Programs**.
3. Select the shortcut folder **TechnoLogismiki**.
4. Select the shortcut subfolder **TechnoLogismiki Works 2011**.
5. Click on **Main Menu**.
6. When the main menu starts (you may be asked to select an interface language, please select English), click on the update tool:



7. You may be asked again to select an interface language for the update tool. Please select English.



8. Hit **Install** to start the installation / update procedure. The installation wizard asks for the data source.



9. Two alternate data sources may be used as described below.

### 6.2.2 Local installation

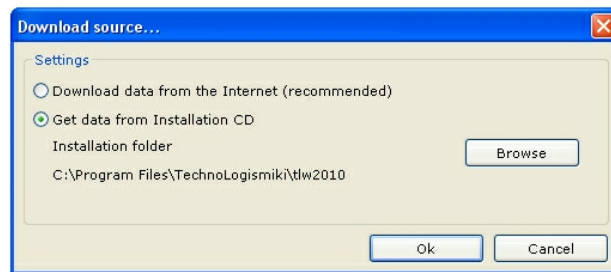
You can choose to install applications using the installation DVD. It is not recommended to use the installation DVD unless you install the programs for the first time. You can always find the latest versions of all our products on the Internet.

To install from the DVD:

1. Select the **Get data from Installation DVD** option.
2. Click the **Browse** button and locate the **Setup** folder in the installation DVD.



3. Hit **Ok** to continue with the add / update procedure.
4. Hit **Cancel** to close the installation wizard without adding or updating any applications.

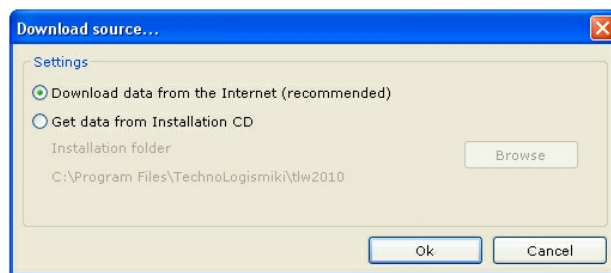


### 6.2.3 Installation from the Internet

You can choose to install programs from the Internet. It is the recommended method for broadband connections 384 Kbps or faster since for slower connections the download time may be several hours.

To install from the Internet:

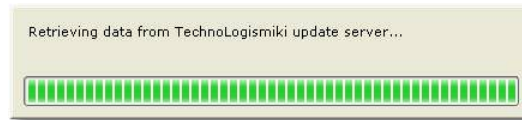
1. Select the **Download data from the Internet (recommended)**.
2. Hit **Ok** to continue with the add / update procedure.
3. Hit **Cancel** to close the installation wizard without adding or updating any applications.



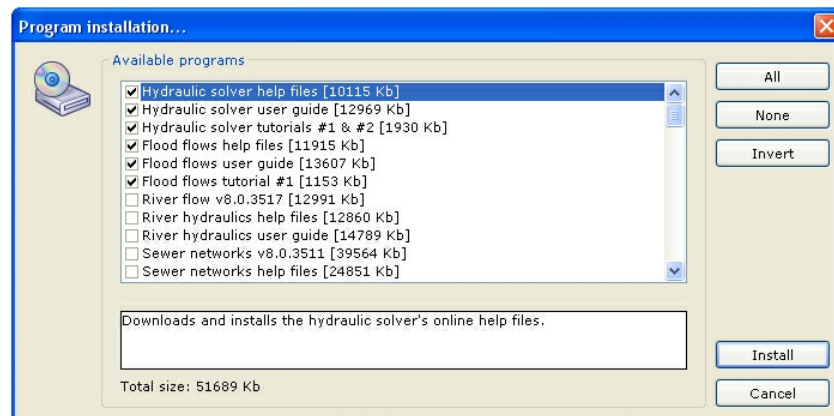
**NOTE:** A valid support contract is required to access all Internet services. If your support contract has expired, the Internet options will be disabled.

## 6.2.4 Select programs

The installation wizard downloads the list of available programs from TechnoLogismiki's update server or from the installation DVD:



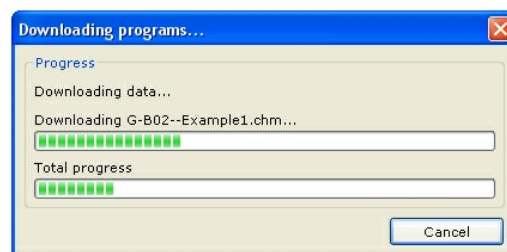
When this procedure finishes, either a message appears informing the user that there are no updated components or new applications or a list with all the available components is displayed:



Select one or more updates / applications from the list with the available programs. Using the buttons **All**, **None** and **Invert** you may select all entries, select no entries or select the unselected entries and vice versa.

Single click each entry to display a detailed description. On the bottom of the window you can see the total size of the selected updates and applications.

Click the Install button to download and install automatically all the selected applications and updates. This procedure may take several minutes depending on the size of the updates and your Internet connection. If you install from the DVD, the total time required to download and install the selected files will not exceed two minutes.



Press the **Cancel** button to stop the procedure without installing the selected upgrades and / or applications.

## 6.3 Remove programs

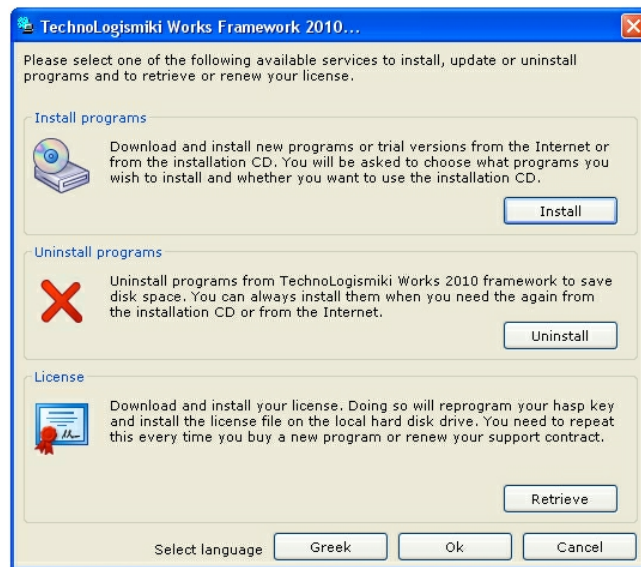
### 6.3.1 Remove programs

To remove one or more programs:

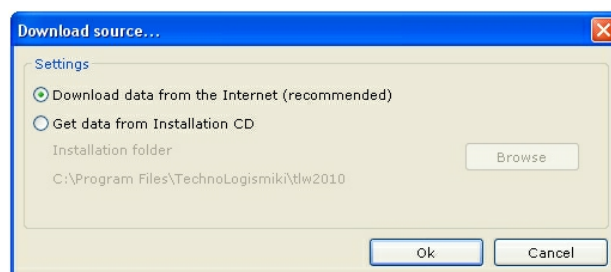
1. Click **Start**.
2. Click **Programs**.
3. Select the shortcut folder **TechnoLogismiki**.
4. Select the shortcut subfolder **TechnoLogismiki Works 2011**.
5. Click on **Main Menu**.
6. When the main menu starts (you may be asked to select an interface language, please select English), click on the update tool:



7. You may be asked again to select an interface language for the update tool. Please select English.



8. Hit **Uninstall** to start the uninstallation procedure. The uninstallation wizard asks for the data source.



9. Two alternate data sources may be used as described below.

### 6.3.2 Local data

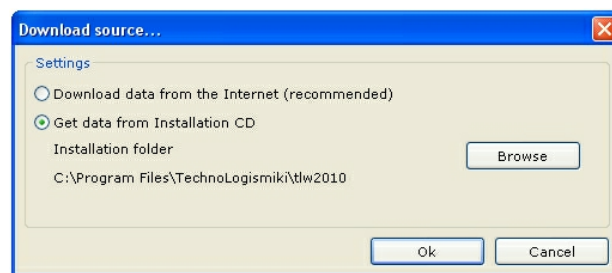
You can choose to uninstall applications using the installation DVD to get the required uninstallation data files.

To uninstall from the DVD:

1. Select the **Get data from Installation DVD** option.
2. Click the **Browse** button and locate the **Setup** folder in the installation DVD.



3. Hit **Ok** to continue with the uninstallation procedure.
4. Hit **Cancel** to close the uninstallation wizard without removing any applications.

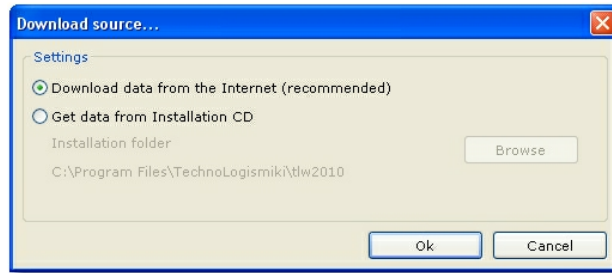


### 6.3.3 Data from the Internet

You can choose to uninstall programs using the Internet to get the required uninstallation data files.

To uninstall from the Internet:

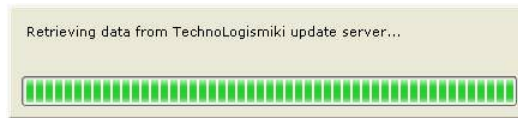
1. Select the **Download data from the Internet (recommended)**.
2. Hit **Ok** to continue with the uninstallation procedure.
3. Hit **Cancel** to close the uninstallation wizard without removing any applications.



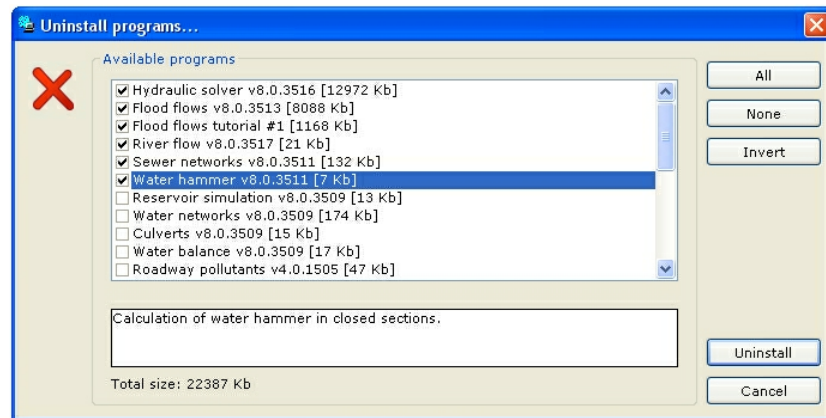
**NOTE:** A valid support contract is required to access all Internet services. If your support contract has expired, the Internet options will be disabled.

### 6.3.4 Select programs

The application downloads the uninstallation scripts from TechnoLogismiki's server or from the installation DVD:



When this procedure finishes a list appears with all the components that may be removed:



Select one or more applications from the list with the available programs. Using the buttons **All**, **None** and **Invert** you may select all entries, select no entries or select the unselected entries and vice versa.

Single click each entry to display a detailed description. On the bottom of the window you can see the total size that will be freed when the selected updates and applications are removed.

Press the **Uninstall** button to automatically remove all the selected applications and components. The total time required for this procedure will not exceed two minutes.

This page was intentionally left blank.